

---

## **Camelway Machinery-Concrete mixer**

- 1. JS Series Twin Shaft concrete mixer**
- 2. JN Series Planetary concrete mixer**
- 3. JZR Series Diesel engine concrete mixer**
- 4. Self Reverse Drum concrete mixer**
- 5. JH Series Mini Portable concrete mixer**

Phone: +8637165861518  
Mail: [info@camelway.com](mailto:info@camelway.com)  
Website: [www.camleway.com](http://www.camleway.com)

## 1. JS Series twin shaft concrete mixer

### Introduction:

Adopt advanced technology, JS series twin-shaft concrete mixer is the ideal type in the world to mix dry-hard concrete, half-dry concrete, plastic concrete and variety of mortars. This series has a full range from JS500 to JS4000. The capacity is from 25m<sup>3</sup>/h to 200m<sup>3</sup>/h. During this series, JS2000-4000 twin shaft concrete mixer is ideal for mixing stiff-consistency concrete, semi-stiff-consistency concrete, plastic concrete and other kinds of concrete in different proportional ratios.

### Application:

JS series concrete mixer can be used independently or as host machine in concrete batching plant, and they are applicable to the normal construction project, road, bridge site, or concrete component factories.

### Features & Advantages of JS twin shaft concrete mixer:

1. Short mixing time, good homogeneity and reliable operation.
2. Shaft tip is sealed by floating-ring, which is reliable and easy to maintain and replace.
3. High working efficiency and long working life.

Model		JS500	JS750	JS1000	JS1500
Discharge volume		500L	750L	1000L	1500L
Charging volume		800L	1200L	1600L	2400L
Theoretical capacity		≥25m <sup>3</sup>	≥35m <sup>3</sup>	≥50m <sup>3</sup>	≥75m <sup>3</sup>
Aggregate sizes		≤60/80mm	≤60/80mm	≤60/80mm	≤60/80mm
Working circle		60s	60s	60s	60s
Mixing blade	Speed	35r/min	30.5r/min	25.5r/min	23r/min
	Quantity	2×7	2×8	2×8	2×9
Mixing motor	Model	Y180M-4	Y200L-4	Y225S-4	Y225M-4
	Power	18.5 kw	30 kw	37 kw	45 kw
Lifting motor	Model	YEZ132S-4	YEZ132M-4	YEZ160L-4	YEZ180M-4
	Power	5.5 kw	7.5 kw	11 kw	18.5 kw
Pump motor	Model	50DWB20-8A	65DWB35-5	KQW65-100	KQW65-100
	Power	0.75 kw	1.1 kw	3 kw	3 kw

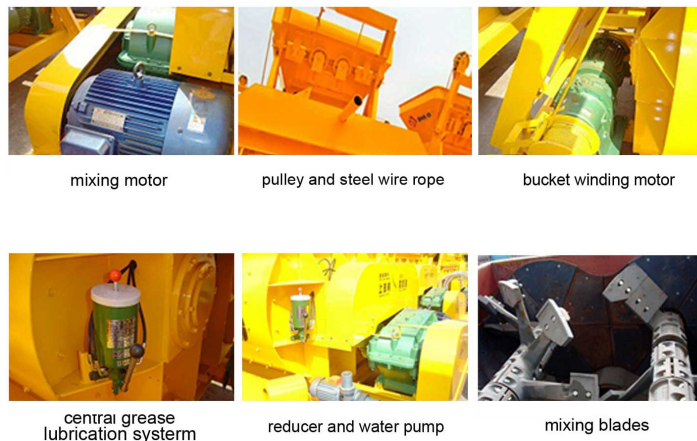
NO 446, Zhengshang Road  
Henan province, Republic of China  
Tel: +86 371 65861518 | Fax: +86 37165861528  
Web: <https://www.camelway.com/>



Weight	1500kg	6150kg	9880kg	10960kg
Dimensions(LxWxH) m	3030x2300x2680m	4550x2250x2450mm	4640x2250x2250m	5058x2250x2440m
Model	JS2000	JS3000	JS3500	
Discharge volume	2000L	3000L	3500L	
Charging volume	3200L	4800L	5600L	
Theoretical capacity	≥100m3	≥150m3	≥180m3	
Aggregate sizes	≤60/80mm	≤60/80mm	≤60/80mm	
Working circle	60s	60s	60s	
Mixing blade	Speed	23.1r/min	21.85r/min	21.85r/min
	Quantity	2×9	2×10	2×11
Mixing motor	Model	Y25M-4	Y280M-6	Y280M-6
	Power	2×37 kw	2×55 kw	2×55 kw
Weight	9200kg	11450kg	12000kg	
Dimensions (LxWxH)	3810x2480x1710mm	4220x2620x1910mm	4300x2680x1910mm	

### General terms:

1. Customized color is available based on previous notice.
2. The third party inspection is available.
3. If needed, the seller can help the buyer to handle shipping and insurance.
4. Marking and package shall be arranged according to applicable international requirements.
5. Guarantee: "Camelway" concrete mixer has been taken under guarantee by the seller from the date of commissioning within 12 months on the premise of regular use of the buyer. An Acceptance Act will follow to inspect the application of the equipment.



## 2. JN series Planetary concrete mixer

### Introduction:

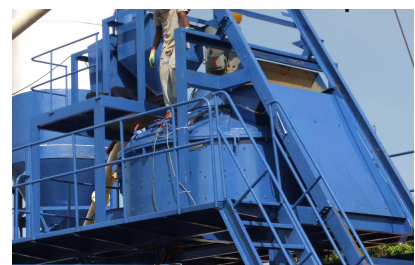
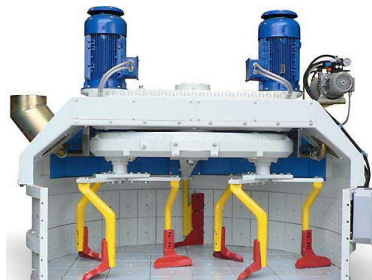
Planetary concrete mixer is widely used to produce precast concrete, commercial concrete and high performance concrete. It is suitable for mixing dry hard concrete and suitable in the production of building blocks and prefabricated parts, and also can be used to produce steel fiber reinforced concrete, color concrete and dry mortar, etc.

### Features & Advantages of JN planetary concrete mixer:

1. Homogeneous mixing performance and high mixing efficiency.
2. Multiple discharging methods.
3. Special designed water sprayer.
4. Transmission system (including motor) is located at the top of mixing drum, completely separated from the concrete, which ensure easy maintenance and no leakage problem.

### Technical parameter of JN planetary concrete mixer:

Model	JN330	JN500	JN750	JN1000	JN1500	JN2000	JN2500
Discharging Volume	330L	500L	750L	1000L	1500L	2000L	2500L
Charging Volume	500L	750L	1125L	1500L	2250L	3000L	3750L
Diameter of Mixing Drum	800mm	1200mm	1800mm	2400mm	3600mm	4800mm	6000mm
Weight	1700kg	2000kg	3500kg	6000kg	7000kg	8500kg	10500kg
Mixing Power	15kw	18.5kw	30kw	37kw	55kw	75kw	90kw
Discharging Power	2.2kw	2.2kw	2.2kw	3kw	3kw	4kw	4kw



### 3. JZR series Diesel engine concrete mixer

#### Introduction:

JZR series concrete mixer is driven by diesel engine and it is suitable for areas which lack electricity. Adopt famous brand engine, it features compact structure, high reliability, easy operation and good performance. This kind of mixer is widely used in building site, road and bridge project and many other construction projects.

This kind of mixer is of bigger capacity and suitable for mixing plastic and low-slump concrete. The performance is better if aggregate size is smaller than 60mm.

#### Features & Advantages of JZR diesel engine concrete mixer:

1. The water pump equipped between water tank of the engine and radiator, which keeps the water temperature of engine to be stable.
2. Removing air sucking point from the back to the front, which will be good to prolong the working life of the engine.
3. Hydraulic and wire rope hoisting for aggregate feeding.
4. 2 or 4 tyres installed to the mixer for easy moving.

#### Technical Parameter of JZR diesel engine concrete mixer:

Model	JZR350W	JZR350H	JZR500H
Capacity of loading	560L		750L
Capacity of discharging	350L		500L
Capacity of water tank	110L		140L
Productivity	10~14m <sup>3</sup> /h		18~22m <sup>3</sup> /h
Power source	Diesel engine, single cylinder, water-cooled with battery starter		
Power	11kw		16kw
Drum rotating speed	13r/min		



## 4. Self Reverse Drum concrete mixer

### Introduction:

Self-reverse drum concrete mixer includes JZC and JZM series. Both of them are portable concrete mixers and are applicable to small construction project, used for the variety of concrete production, mortar and grout, etc.

JZC series concrete mixers are bipyramid-type self-reverse mixers, concrete is mixed by drum rotating. They adopt electric motor for power supply and commonly install 2 tyres for mixer position moving.

### Features & Advantages of JN planetary concrete mixer:

1. Customized color is available based on previous notice.
2. The third party inspection is available.
3. If needed, the seller can help the buyer to handle shipping and insurance.
4. Marking and package shall be arranged according to applicable international requirements.

### Technical parameter of JZC and JZM concrete mixer:

Model	JZC350	JZC500	JZM500	JZM750
Discharging volume	350L	500L	500L	750L
Charging volume	560L	800L	800L	1200L
Capacity	10-14m <sup>3</sup> /h	18-20m <sup>3</sup> /h	25-30m <sup>3</sup> /h	30-35m <sup>3</sup> /h
Drum rotating speed	14r/min	13r/min	13r/min	12.26r/min
Max. Aggregate size	60-80mm	60-80mm	60-80mm	60-80mm
Max. Aggregare size	5.5kw	7.5kw	7.5kw	11kw
Mixing motor	4.5kw	5.5kw	5.5kw	7.5kw
Hoisting motor	0.55kw	0.75kw	0.75kw	0.75kw
Water pump	20km/h	20km/h	20km/h	/
Total weight	1950kg	2400kg	3000kg	4000kg
Dimensions	2766x2140x3000mm	3500x2200x3200mm	5200x2065x3200mm	5650x2065x3535mm

## 5. JH series Mini Portable concrete mixer

### Introduction:

JH series portable concrete mixers have 3 types of driven way, electric motor driven, gasoline engine driven and diesel engine driven. They can mix wet concrete, dry concrete, mortar and grout, etc, and are widely used for small and occasional construction projects.

### Features & Advantages of JH portable mini concrete mixer:

1. Small in size.
2. Manually operation and easy moving.
3. High speed and top quality for mixing.
4. Good performance and long working life.

### Technical parameter of JH portable mini concrete mixer:

Model	Parameters					
	Power		Drum Capacity	Weight	Drum Thickness	
	Diesel Engine	Electric Motor			Top	Bottom
JH35Y	/	370W	100/125L	55kg	1.2mm	1.8mm
JH35C	/	370W	100/125L	55kg	1.2mm	1.8mm
JH35H	/	370W	100/125L	55kg	1.2mm	1.8mm
JH35Z	/	370W	100/125L	55kg	1.2mm	1.8mm
JH35J	/	370W	100/125L	55kg	1.2mm	1.8mm
JH35S	/	370W	100/125L	58kg	1.2mm	1.8mm
JH35L	/	370W	100/125L	60kg	1.2mm	1.8mm
JH35B	/	370W	100/125L	55kg	1.2mm	1.8mm
JH35D	2.5HP gasoline engine	/	100/125L	59kg	1.2mm	1.8mm
Model	Power	Volume	Packing Size	Drum Thickness		
JH90X	5.5HP Diesel engine	260/350L	1960×1250 ×1470mm	2.5mm		
JH90	5.5HP Diesel engine	260/350L	1960×940×1100mm	2.5mm		
JH90S	5.5HP Diesel engine	260/350L	1960×940×1100mm	2.5mm		
JH90H	5.5HP Diesel engine	260/350L	1960×940×1100mm	2.5mm		
JH90Z	5.5HP Diesel engine	260L	1960×830×1100mm	2.5mm		
JH150	5.5HP Diesel engine	400L	2010x970x1240mm	2.5mm		