

Self-Loading Concrete Truck Mixer

Features&Advantages

Mobile concrete mixer feature combines self-loading,weighting,mixing and discharging,it can maximize and improve the job efficiency and reduce the production cost and time.

High efficiency

- Capacity: 12-16cubic meters per hour
100cubic meters/day
3000cubic meters /year
- Labor-saving
- 4 WD
- Accurate electric weighing system.
- The mixing unit is hydraulic slewing 270 degree for high discharge over 1.8m to the four sides of the vehicle.
- Loading,weighing,pumping,mixing,delivering and discharge.



- Ultimate tank capacity technology. can discharge with different angles



- The clever discharge cone is designed, to provide stronger material sealing capacity and higher filling rate, thus improving the loading capacity of the tank up to 6%.
- Loading capacity is larger for the same volume.
- The center of gravity is low for the same loading capacity.
- Swing tank easy discharge to different way.

- High-strength wear-resistant application.



- Tank and blades are made of high-strength wear-resistant steel, with

service life increased by 30%.

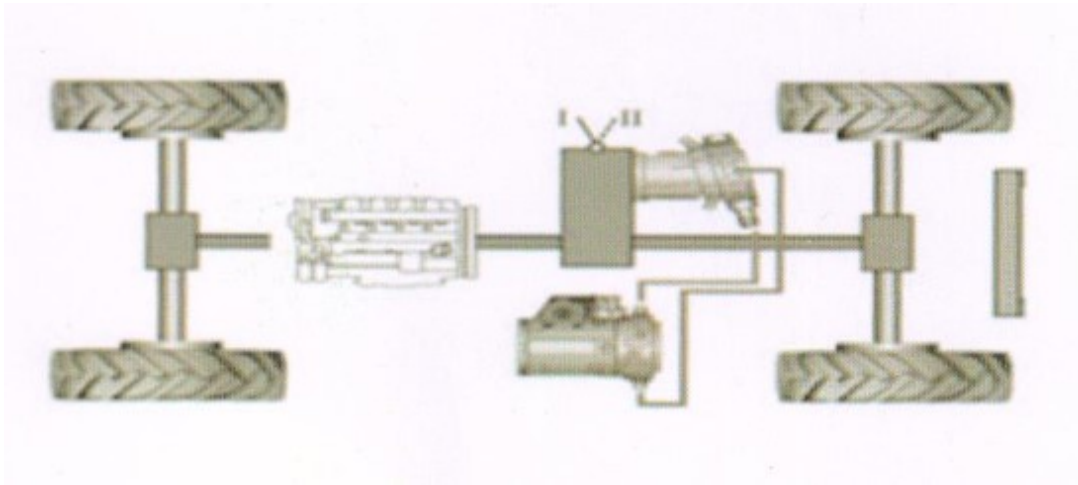
- Hoppers and detachable chutes are made of multilayer high-strength wear-resistant liner plate, with service life increased by 50%.

■ New exterior styling



- Overall machine features attractive appearance, smooth stream line, perfect streamlined hopper, arc-shaped rear support, and full steel catwalk, giving more attractive design to provided you a new experience.

Efficient hydraulic drive system



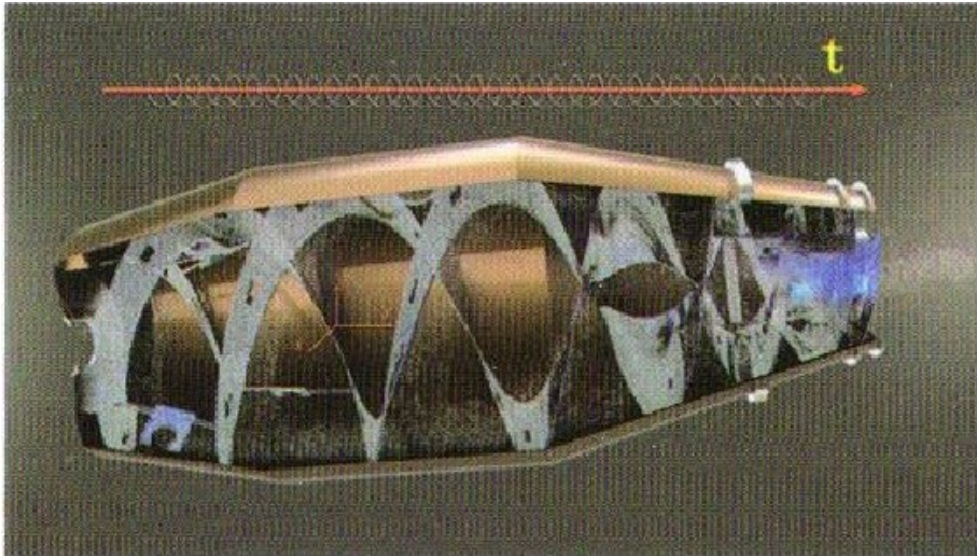
As the complete vehicle is equipped with four-wheel drive, it can be used for efficient and stable concrete production in harsh working conditions.

■ High precision weighing system



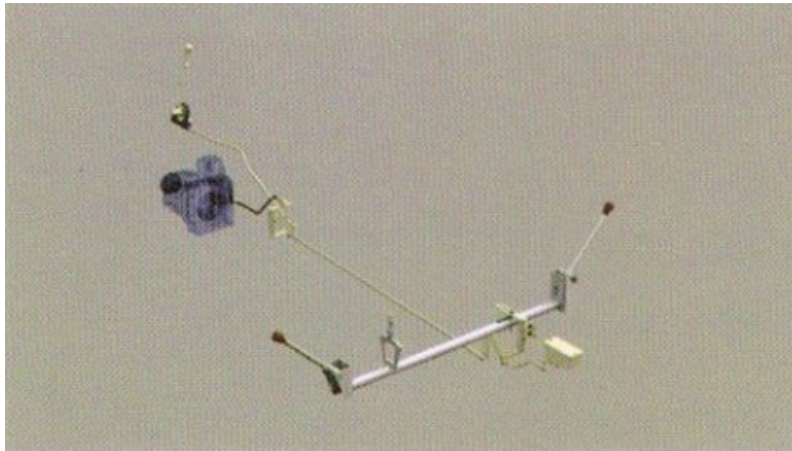
- It can be used for aggregate weighing in the process of loading, thus ensuring that concrete meets the construction requirements and weighing precision within $\pm 3\%$.

■ Four-dimensional mixing technology.



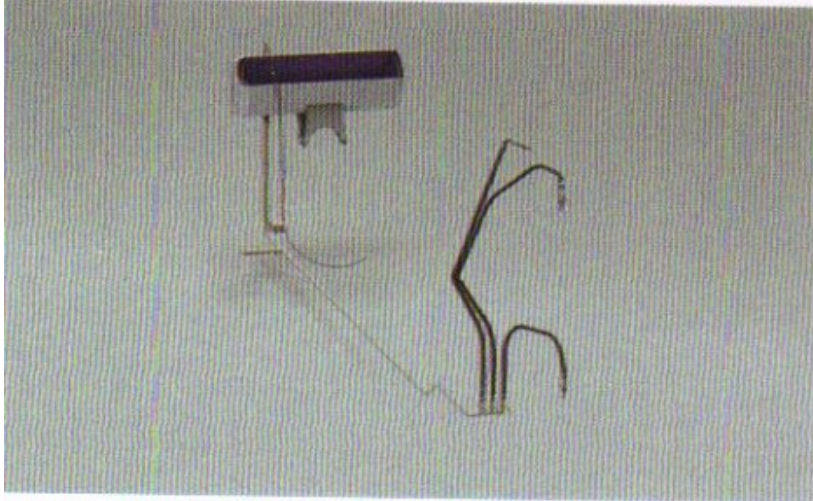
- Large rise angle is designed at from cone to provide uniform mixing, with changed on a slump change at all stages of $\leq 5\%$.
- Unique continuous trace design is used, with residual rate $\leq 0.4\%$.
- Large gliding angle is designed at rear cone, to ensure fast discharge at idle speed.

■ Safe and flexible operation system



- Longitudinal resistance-free design is used, to provide more flexible manipulation.
- Front and rear linkage double-limit structure is used, to provide higher safety.

■ Convenient water supply system



- Integrated control is used with one-inlet and multiple-outlet applied, convenient and fast.
- Liner water tank structure is used with service life increased by 50%.
- Cabin: Front cab on side of loading shovel



- ROPS-FOPS type complete with double closing door, camera, air conditioning, available upon request





- Joystick: All hydraulic functions of shovel controlled by a single joystick.



- Loading shovel: effective capacity per loading complete with hydraulic opening gate with bigger blade.



- Working table controlled by microcomputer, water temperature, oil temperature, current are all insight



- Adjustable seat, convenient and comfortable to use



- Cummins engine Optional



- South Korea Swing motor with better quality



Main Specification

Phone/what'sapp: 008618838109566

Email: info@camelway.com website: <https://www.camelway.com>

Henan Camelway Machinery Manufacture Co., Ltd.
No. 446 ZhengShang Road, Zhengzhou, Henan Prov., China

Name	Item	Specification	
	Net	9000 KG	
	Gross	12675KG	
	Transmission	Full Hydraulic	
		4 WD	
	Brake	Air Brake	
	Chassis	Off-road	
	Tread	1880	
	Wheelbase	2250mm	
	Loader bucket	capacity	0.6m3
		Control	Hydraulic
	Tilt angle	30%	
	Speed	High	0-25KM/H
		Low	0-9KM/H
	Mini turning radius	6.5M/R	
	Tyre model	16/70-20	
Engine	Type	YUCHAI Cummin	4108 Turbo charged 4BT3.9-C125
	Rated Power/RPM	95KW/2200RPM Or 125HP /2200RPM	
	Max.Torque/RPM	460N.M/1400RPM	
	Cylinder	4	
	Starter	Electric	
	Cooling type	water cooling	
Maxing Drum	Output capacity	4.2 M3	
	Bank Angle	16 °	
	Rotation Angle	19-21R/min	
Chute	Swing Angle	≥60°	
	Angle control	Hydraulic	
	Size	Long:176cm	
		Short: 40cm	
	Weighing model	computer control	
		Concrete Standard	C15.C20.C25 C30
	Accuracy	Cement	≤ ±2%/time
		Relative Error	≤ ±3%/time
		water	≤ ±1%/time
		Additive	≤ ±1%/time
		Admixture	≤ ±2%/time
Loader control	Hydraulic 4 way stick		

Camelway Self Load Mixer PK OTHER

Drum work capacity 3.87cbm	Drum work capacity less than 3.5cbm
20MN High strength manganese steel drum body, thicker, good wear-resisting	16MN Manganese steel tank, the tank is thin and not wear-resistant
	
The feeding mouth is thickened and hard wearing, 0.7cbm per feeding	The feeding mouth is too thin and not wear-resistant, the design of the receiving material cannot be fully loaded
	
The cylinder rotating frame supports the cylinder structure with high toughness stability	The tank rotating bracket is unreinforced, too thin



Rotary speed reducer with rotary support structure



The outer worm wheel is turned and the bearing is small and easy to collide



The stirring motor is powerful



The stirring motor is too small, only use for 2.5cbm machine



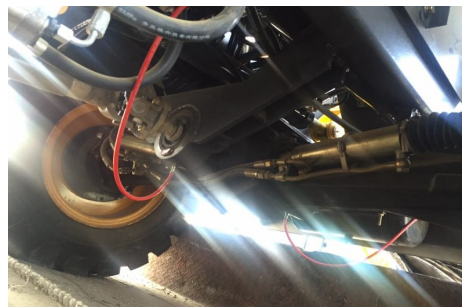
The diameter of the steering axle is 45.5 mm, and the diameter of the axle is 57mm



The diameter of the axle of the light vehicle bridge is 22mm and the diameter of 32mm



Transmission axis horizontal, kinetic energy transmission stability



The shaft Angle more than 10° is easy to wear



Big arm integral oil cylinder structure, strong and powerful



Large arm three-link structure, structural point is not tight, easy to be damaged



Rear and side double camera, broad vision



The side has no camera, the reflector Angle is dead Angle, big security danger



Spray paint evenly, the paint added anti-ultraviolet additives, the details are perfect



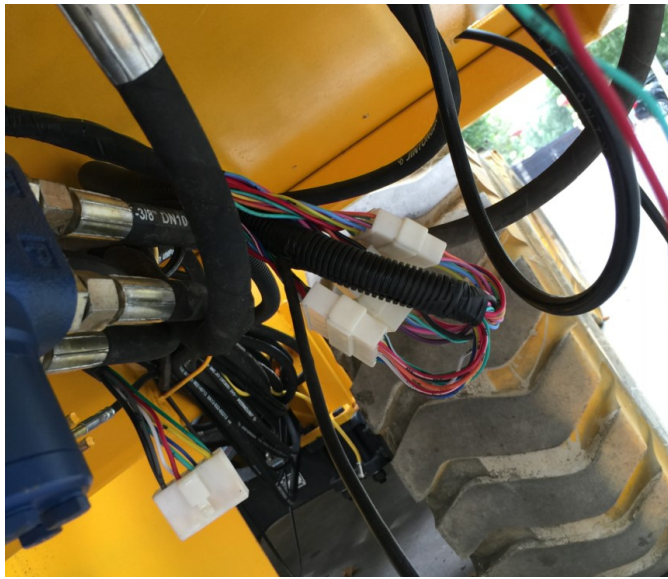
Too much rough rust ,not good details and surface



Overall circuit waterproofing



Overall circuit not waterproofing



Steel wire super - resistant engineering tire



General engineering tire

